

PREPARED BY JEFF S. HODAPP, P.S.M.

EVERGRENE P.C.D.



CARNAHAN · PROCTOR · CROSS, INC.

CONSULTING ENGINEERS · SURVEYORS · PLANNERS

6101 WEST ATLANTIC BOULEVARD, MARGATE, FLORIDA 33063
PHONE: 954-972-3959 FAX: 954-972-4178

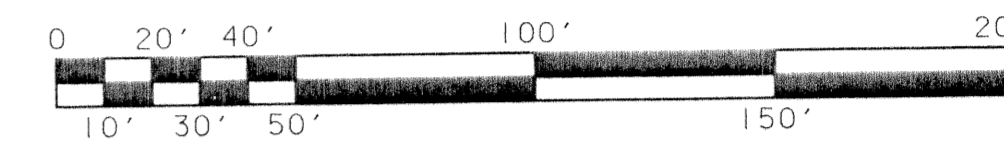
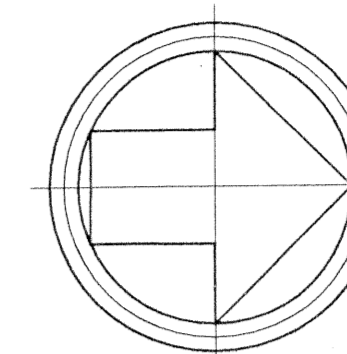
MAY 2002

990901B

JSH

EVERGRENE PLAT TWO

A REPLAT OF A PORTION OF TRACT "A", "EVERGRENE" (P.B. 93, PGS. 117-119, P.B.C.R.)
CITY OF PALM BEACH GARDENS, PALM BEACH COUNTY, FLORIDA

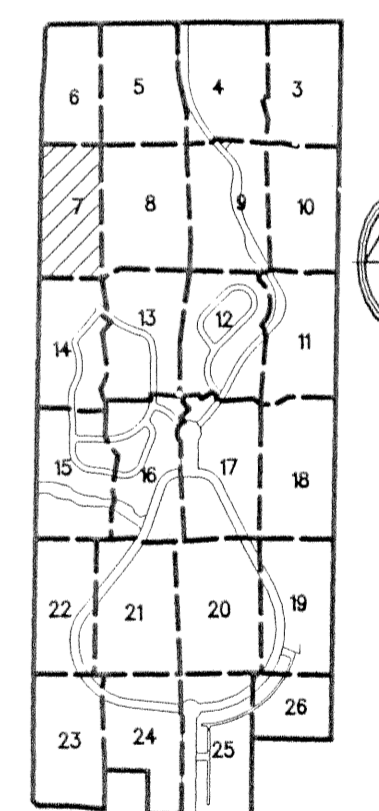
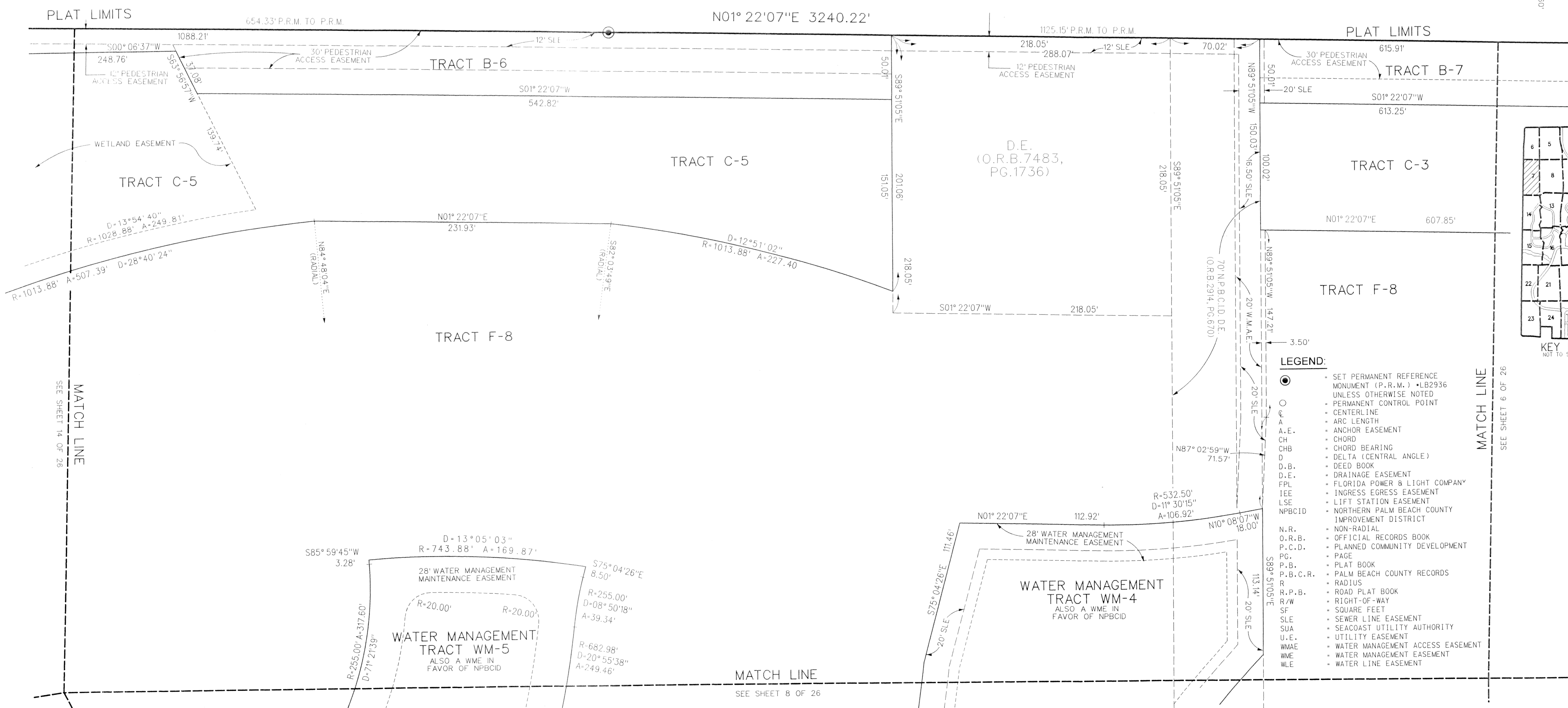


SCALE: 1"=40'

SHEET 7 OF 26

MILITARY TRAIL

(O.R.B. 2353, PG. 1542)
N01° 22' 07" E 2618.49'
WEST LINE E 1/2 SECTION 25-41-42



KEY MAP
NOT TO SCALE

LEGEND:

- SET PERMANENT REFERENCE MONUMENT (P.R.M.) • LB2936 UNLESS OTHERWISE NOTED
- PERMANENT CONTROL POINT
- CENTERLINE
- ARC LENGTH
- ANCHOR EASEMENT
- CHORD
- CHORD BEARING
- DELTA (CENTRAL ANGLE)
- DEED BOOK
- DRAINAGE EASEMENT
- FLORIDA POWER & LIGHT COMPANY
- INGRESS EGRESS EASEMENT
- LIFT STATION EASEMENT
- NORTHERN PALM BEACH COUNTY IMPROVEMENT DISTRICT
- NON-RADIAL
- OFFICIAL RECORDS BOOK
- PLANNED COMMUNITY DEVELOPMENT
- PAGE
- PLAT BOOK
- PALM BEACH COUNTY RECORDS
- RADIUS
- ROAD PLAT BOOK
- R.P.B.
- RIGHT-OF-WAY
- SQUARE FEET
- SEWER LINE EASEMENT
- SEACOAST UTILITY AUTHORITY
- UTILITY EASEMENT
- WATER MANAGEMENT ACCESS EASEMENT
- WATER MANAGEMENT EASEMENT
- WATER LINE EASEMENT

PLAT LIMITS

PLAT LIMITS

MATCH LINE
SEE SHEET 14 OF 26

MATCH LINE
SEE SHEET 6 OF 26

MATCH LINE
SEE SHEET 8 OF 26

FILE: r:\990901b\cadd\pl\012p2p7.dgn
DATE: 16-May-02 16:12